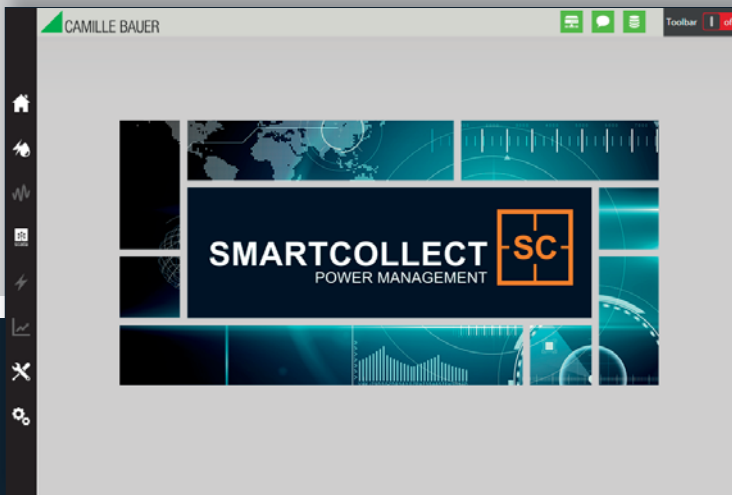


- Measured data acquisition
- Data analysis
- Energy monitoring
- Automatic reporting

Data management software



Energy data readout, storage and presentation

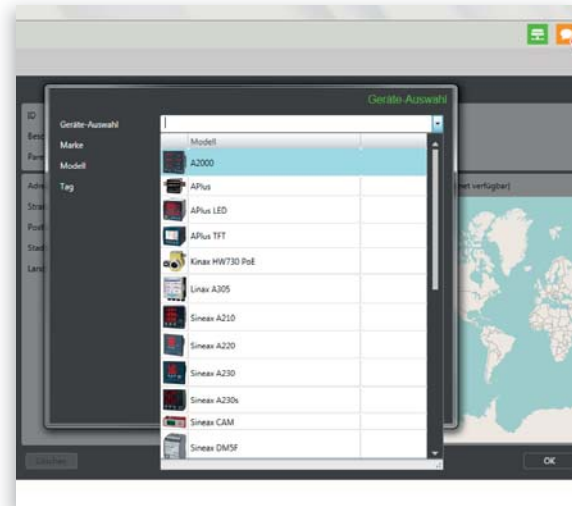
Increasing energy demand and higher energy costs together with the limited availability of natural resources require continually more efficient handling of energy. However, there are not only ecological and economical reasons but also legal regulations which drive companies to the introduction of an energy management system. The focus is on consumption optimisation to increase energy efficiency.

The detailed acquisition of consumption values and their chronological allocation to processes forms the basis of any consumption optimisation. Energy efficiency can only be increased, if one knows exactly where and how costs were generated.



Energy data diagram

Operating as one of the leading technology and innovation providers of high-quality instrumentation for the areas of energy generation and distribution, Camille Bauer has pursued the goal of making the processes of its customers more efficient and energy-saving for a long time. Today, Camille Bauer takes another step and offers in the powerful SMARTCOLLECT software solution a system which is easily handled and corresponds to the requirements of an energy management system according to ISO 50001.



Menu-guided instrument selection

Your benefit



✓ User-friendly and flexible

SMARTCOLLECT is very easily installed on computers with current Windows operating systems. The free-of-charge SQL R2 Express is used as a database.

The clear hierarchical structure and easy menu guidance with integrated help functions of the Graphic User Interfaces facilitate an intuitive operation after a brief familiarisation period. Well-arranged visualisation contributes to user friendliness.



✓ Modular design - low costs

The modularly designed software and licence model facilitates easy system expansion and may be adapted to your individual requirements.



✓ Versatile use

The SMARTCOLLECT ENERGY basic version facilitates the flexible acquisition, storage and visualisation of all energy data (e.g. electrical energy) as well as different material flows like gas, steam, water through to heat quantities. Via the Modbus Interface, not only Camille Bauer and Gossen Metrawatt products but also instruments of the most varied manufacturers may be connected.



✓ Information - world-wide

SMARTCOLLECT Client facilitates local or world-wide access to the data archived in the SMARTCOLLECT database. The web access allows for working in any locations at any time. The software is multilingual (DE, EN, FR, IT, ES, NL, CZ and CN). The language is very easily switched during operation.



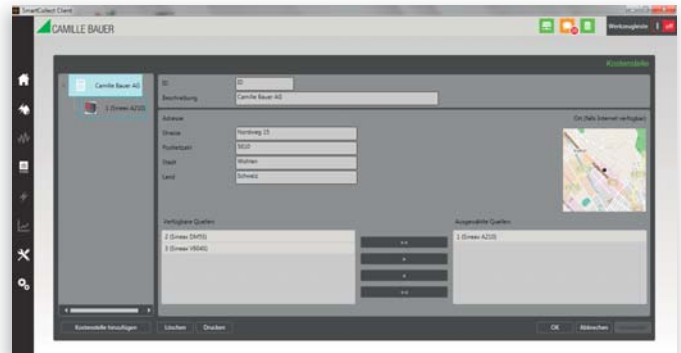
✓ Competent support

Camille Bauer supports you with a comprehensive service offer from training programs, consultation and planning services through to its customer support which is available world-wide.

SMARTCOLLECT ENERGY scope of performance

The powerful SMARTCOLLECT software has been particularly designed for applications in energy business and industry as well as for service providers and public authorities. It measures, stores and visualises all of the relevant consumption data of current, gas, water or heat. This results in the following benefits:

- **Transparency:** Overall energy consumption view of the acquired media in real time as well as the allocation to individual consumers.
- **Recognition of weak points:** The comprehensive visualisation and reporting functions recognise and show weak points.
- **Optimisation:** Proposals for improvement measures may be evaluated on basis of recognised weak points.
- **Cost reduction:** The identification and realisation of recognised saving potentials reduce costs.



Example: Energy management – cost centre allocation



Example: Visualisation

SMARTCOLLECT Client



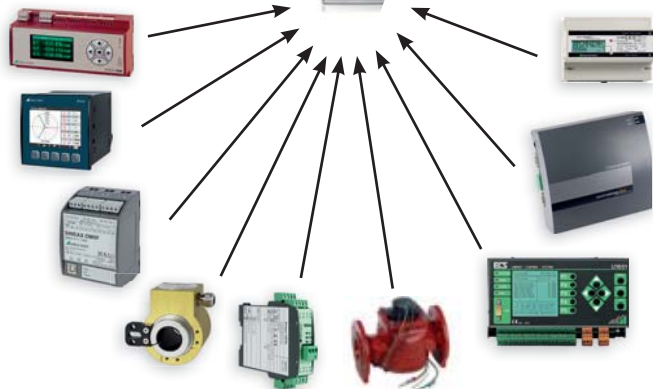
SQL Database



more clients are possible



SMARTCOLLECT Server



Exemplary system design

The SMARTCOLLECT energy management software consists of the following components:

- **SMARTCOLLECT Client:** Graphic visualisation of queried data, export via Excel file, configuration module to determine the data sources to be read out and error/warning messages via email.
- **SMARTCOLLECT Server:** Collects and configures data from active sources and channels and writes the same directly into the central database.
- **Database:** This free-of-charge SQL database contains the collected data.

The SMARTCOLLECT software components may be installed on a single system or several servers or computers.

Typical applications

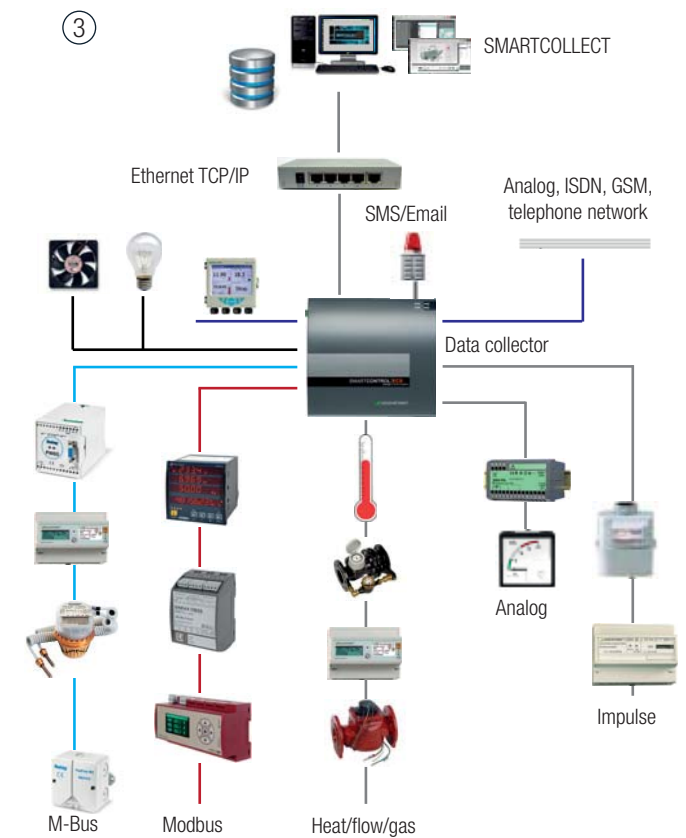
Camille Bauer is your competent partner and offers a wide spectrum of products for effective energy data management from the acquisition level through to the management level. The SMARTCOLLECT software acquires, stores and presents not only electrical measured variables but also variables like gas, water and heat quantities. The instrument data may be integrated either directly via Ethernet TCP/IP, Modbus RTU (RS485) or via a data collector like SMARTCONTROL.



Easy use, readout with Modbus RTU



Easy use, readout with Modbus TCP



Complex system application with different measured variables in an industrial environment

Typical sectors



Industry

- Steel and aluminium
- Chemicals and petrochemicals
- Wood, paper, glass, cement
- Metal processing
- Machine and plant construction
- Automation
- Food and beverage
- Energy distribution/supply



Public authorities

- Schools, colleges and universities
- Hospitals and clinics
- Public buildings



Service providers

- Logistics
- IT

 **CAMILLE BAUER**

Rely on us.

Camille Bauer Metrawatt AG
Aargauerstrasse 7
CH-5610 Wohlen / Switzerland

Telephone: +41 56 618 21 11

Telefax: +41 56 618 21 21

info@cbmag.com

www.camillebauer.com