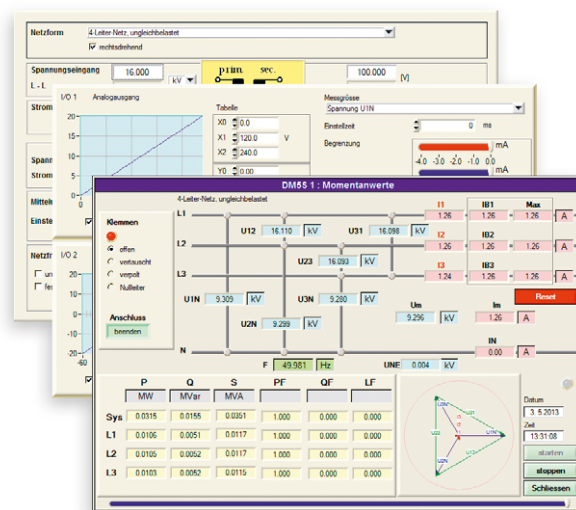


APPLICATION REPORT

SgurrEnergy (a Wood Group Business) is a leading renewable energy consultancy, providing engineering and technical advisory services in onshore / offshore wind, solar, wave, tidal and hydro projects. They are also quite unique in that they have UKAS approval for monitoring wind turbine performance, they carry out independent tests which are often required as part of the contract between turbine manufactures, site owners and energy users. It's in this area that we have supported SgurrEnergy over the last few years, during this period they have tried a number of power transducers to support their test requirements and have finally settled for the SINEAX DM5S Programmable Multifunctional Transducer. With its programmability, accuracy levels and analogue outputs it offers all that is required to monitor the efficiency of the turbines power generating capabilities. The MODBUS interface solves the communication problems and helps to transmit important test data without the need for too much hard wiring, 80 meters up into a windy turbine nacelle!



CB-Manager Software



SINEAX DM5S

